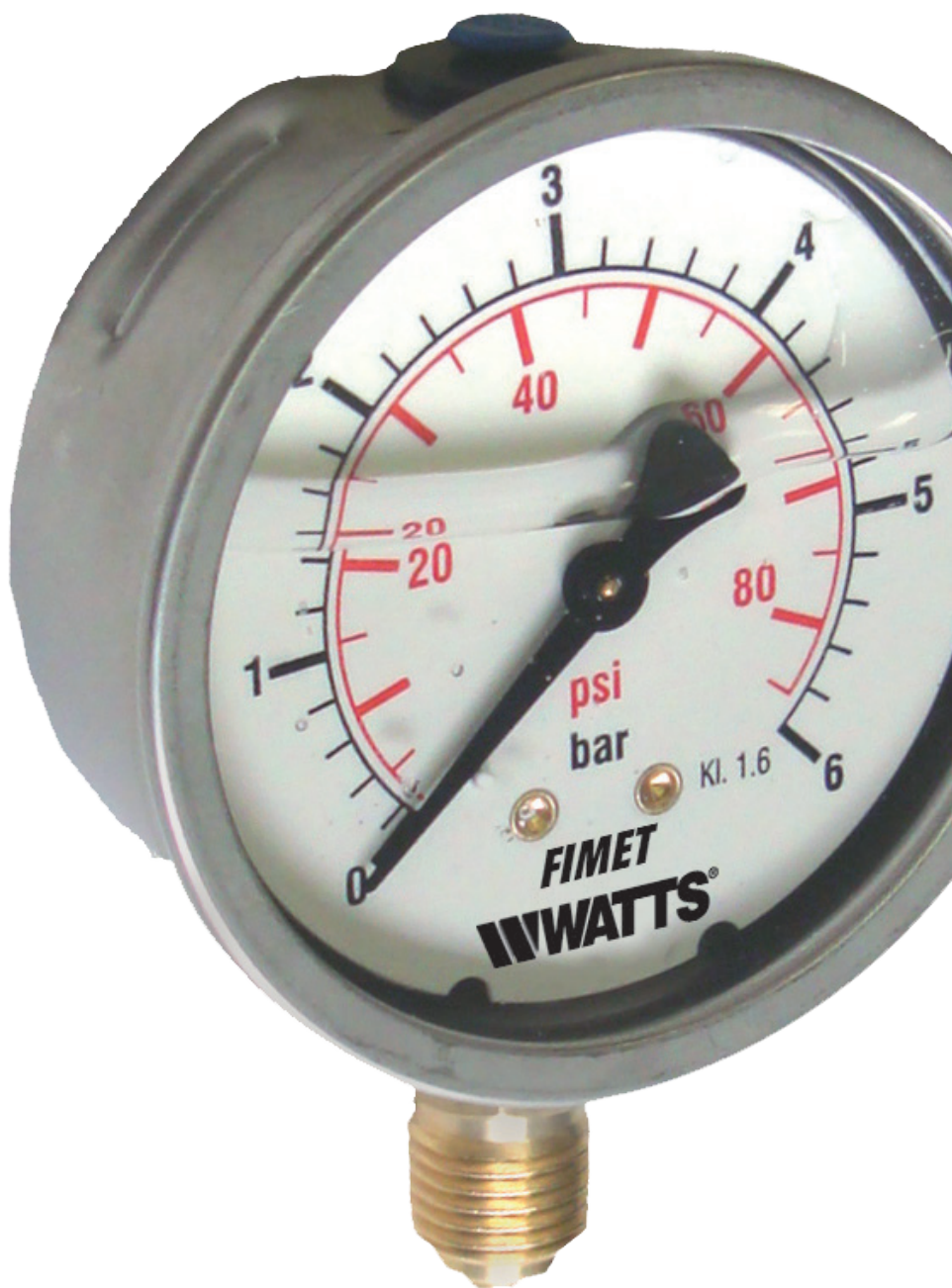


# MG1-INOX

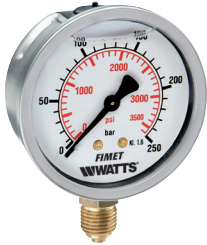
Bourdon tube pressure gauges

## Technical Data Sheet



## Description

Glycerine filled stainless steel case bottom entry. For pneumatic industry, gases and liquids not viscous, not aggressive and not crystallising.



### MG1-INOX 50

DN50 pressure gauges.

Part No	Pressure Range	Connection	Options*	Box/Master	Min. order
	0-2.5 bar/psi	G1/4B		50/50	100
PZ7M2504DJ00	0-4 bar/psi	G1/4B	D	50/50	100
PZ7M2506DJ00	0-6 bar/psi	G1/4B	D	50/50	100
PZ7M2510DJ01	0-10 bar/psi	G1/4B	D	50/50	100
PZ7M2512DJ00	0-12 bar/psi	G1/4B	D	50/50	100
PZ7M2516DJ01	0-16 bar/psi	G1/4B	D	50/50	100
PZ7M2520DJ00	0-20 bar/psi	G1/4B	D	50/50	100
PZ7M2525DJ01	0-25 bar/psi	G1/4B	D	50/50	100
PZ7M2540DJ00	0-40 bar/psi	G1/4B		50/50	100
	0-60 bar/psi	G1/4B		50/50	100
PZ7M2648DJ00	0-100 bar/psi	G1/4B	D	50/50	100
	0-160 bar/psi	G1/4B		50/50	100
PZ7M2660DJ00	0-250 bar/psi	G1/4B	D	50/50	100
	0-315 bar/psi	G1/4B		50/50	100
	0-400 bar/psi	G1/4B		50/50	100
	0-600 bar/psi	G1/4B		50/50	100

### MG1-INOX 63

DN63 pressure gauges.



Part No	Pressure Range	Connection	Options*	Box/Master	Min. order
	-76-0 cm Hg	G1/4B		100/100	100
PE309914LF	-1/0 bar/in Hg	G1/4B	D+LF	100/100	10
PE3401DJ00	-1/0.6 bar/psi	G1/4B	D	100/100	100
PE3502DJ00	-1+1.5 bar/in hg	G1/4B	D	100/100	100
PE3504BJ01	-1+3 bar	G1/4B		100/100	100
PE308722	-1+5 bar	G1/4B		100/100	100
PE3510DJ04	-1+9 bar	G1/4B		100/100	100
	-1+15 bar	G1/4B		100/100	100
PE340114LF	0-1 bar/psi	G1/4B	D+LF	100/100	10
PE340214LF	0-1.6 bar/psi	G1/4B	D+LF	100/100	100
PE350314LF	0-2.5 bar/psi	G1/4B	D+LF	100/100	10
PE350414LF	0-4 bar/psi	G1/4B	D+LF	100/100	10
PE350614LF	0-6 bar/psi	G1/4B	D+LF	100/100	10
PE351014LF	0-10 bar/psi	G1/4B	D+LF	100/100	10
PE351214LF	0-12 bar/psi	G1/4B	D+LF	100/100	10
PE351614LF	0-16 bar/psi	G1/4B	D+LF	100/100	10
PE352014LF	0-20 bar/psi	G1/4B	D+LF	100/100	10
PE352514LF	0-25 bar/psi	G1/4B	D+LF	100/100	10
PE354014LF	0-40 bar/psi	G1/4B	D+LF	100/100	10
PE364414LF	0-60 bar/psi	G1/4B	D+LF	100/100	10
PE364814LF	0-100 bar/psi	G1/4B	D+LF	100/100	10
PE365414LF	0-160 bar/psi	G1/4B	D+LF	100/100	10
PE366014LF	0-250 bar/psi	G1/4B	D+LF	100/100	10
PE366214LF	0-315 bar/psi	G1/4B	D+LF	100/100	10
PE366614LF	0-400 bar/psi	G1/4B	D+LF	100/100	10
PE367014LF	0-600 bar/psi	G1/4B	D+LF	100/100	10



## MG1-INOX 100

DN100 pressure gauges.

Part No	Pressure Range	Connection	Options*	Box/Master	Min. order
	-76-0 cm Hg	G1/2B		1/30	30
PE509916LF	-1/0 bar/in Hg	G1/2B	D+LF	1/30	1
PE5402BL01	-1/0.6 bar	G1/2B		1/30	30
PE5403DL00	-1+1.5 bar/in hg	G1/2B	D	1/30	30
PE5404DL00	-1+3 bar	G1/2B	D	1/30	30
PE5406DL00	-1+5 bar	G1/2B	D+LF	1/30	30
	-1+9 bar	G1/2B		1/30	30
PE5416BL00	-1+15 bar	G1/2B		1/30	30
PE540116LF	0-1 bar/psi	G1/2B	D+LF	1/30	30
PE540216	0-1.6 bar/psi	G1/2B	D	1/30	30
PE550316LF	0-2.5 bar/psi	G1/2B	D+LF	1/30	1
PE550416LF	0-4 bar/psi	G1/2B	D+LF	1/30	1
PE550616LF	0-6 bar/psi	G1/2B	D+LF	1/30	1
PE551016LF	0-10 bar/psi	G1/2B	D+LF	1/30	1
PE551216LF	0-12 bar/psi	G1/2B	D+LF	1/30	1
PE551616LF	0-16 bar/psi	G1/2B	D+LF	1/30	1
PE552016LF	0-20 bar/psi	G1/2B	D+LF	1/30	30
PE552516LF	0-25 bar/psi	G1/2B	D+LF	1/30	1
PE554016LF	0-40 bar/psi	G1/2B	D+LF	1/30	1
PE564416LF	0-60 bar/psi	G1/2B	D+LF	1/30	1
PE564816LF	0-100 bar/psi	G1/2B	D+LF	1/30	1
PE565416LF	0-160 bar/psi	G1/2B	D+LF	1/30	1
PE566016LF	0-250 bar/psi	G1/2B	D+LF	1/30	1
PE566216LF	0-315 bar/psi	G1/2B	D+LF	1/30	30
PE566616LF	0-400 bar/psi	G1/2B	D+LF	1/30	1
PE567016LF	0-600 bar/psi	G1/2B	D+LF	1/30	1

### \*Options included

D = Dual scale bar/psi (black/red)  
 LF = Finet Watts logo on the dial

## Customizations per minimum order quantity

Customizations	Model
Z - Restrictor hole 0.5 mm for ranges < 40 bar	MG1-INOX 63/100
Z0 - Without restrictor hole 3 mm for ranges ≥ 40 bar	MG1-INOX 63/100
RN - Zero filling for ambient temperatures -40° +60 °C	MG1-INOX 63/100
VC - Chemical window	MG1-INOX 63
Customized dials, other scale ranges or connections on req	MG1-INOX 50/63/100

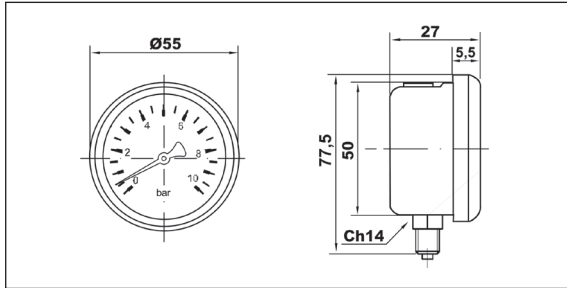
## Features

Materials	MG1-INOX 50	MG1-INOX 63	MG1-INOX 100
Case + roll on bezel	Stainless steel AISI 304 with blow-out device	Stainless steel AISI 304 with blow-out device	Stainless steel AISI 304 with blow-out device
Window	Polycarbonate	Vedril PMMA	Vedril PMMA
Dial	White aluminium	White aluminium	White aluminium
Pointer	Black plastic	Black plastic	Black plastic
Pressure connection	Cu-alloy, 14 mm flats	Cu-alloy, 14 mm flats	Cu-alloy, 21 mm flats
Pressure element	Bourdon tube Cu-alloy, soft soldered ≤ 60 bar C-type, > 60 bar helical type Sn-Ag soldered	Bourdon tube Cu-alloy, soft soldered ≤ 60 bar C-type, > 60 bar helical type Sn-Ag soldered	Bourdon tube Cu-alloy, soft soldered ≤ 60 bar C-type, > 60 bar helical type Sn-Ag soldered
Movement	Cu-alloy	Cu-alloy	Cu-alloy
Liquid filling	Glycerine 99.5%	Glycerine 99.5%	Glycerine 99.5%

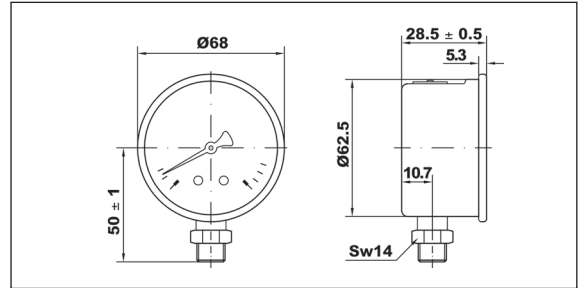
Technical features	
Design	EN 837-1
Working pressure	Steady: 75% of full scale value Fluctuating: 60% of full scale value Short time: full scale value
Temperature limits	Ambient: -20 ... +60°C Medium: +60°C maximum Storage: -20 ... +60°C
Temperature effect	Deviation from reference temperature (+20°C): ±0,04%/1K of the span
Accuracy class: MG1-INOX 50 MG1-INOX 63 MG1-INOX 100	cl. 2.5 cl. 1.6 cl. 1.6
Degree of protection	IP 65 for EN 60 529 / IEC 529
Individual weight: MG1-INOX 50 MG1-INOX 63 MG1-INOX 100	0.130 kg 0.206 kg 0.526 kg

## Overall dimensions (mm)

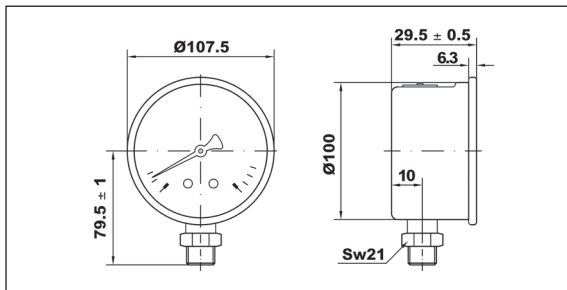
### MG1-INOX 50



### MG1-INOX 63



### MG1-INOX 100



## Specification text

Bourdon tube pressure gauges, **MG1-INOX Series**, Watts brand, for pneumatic industry, gases and liquids not viscous, not aggressive and not crystallizing. **Glycerin filled inox case** DN 50-63-100 mm **bottom entry**. Vacuum measures range -1/0 at high pressure up to 600 bar. Temperature limits + 60°C. Accuracy class 1.6. **Compliant with EN 837-1.**