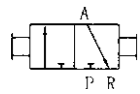
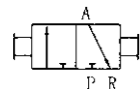


## Hand Slipping Valve



● SH-06



● SH-15

### Technical Parameter

Item Specification	Pipe size	Nominal Diameter (mm)	Applicable Medium	Pressure Range	Medium Temperature
SH-M5	M5	2.5	Air	0 ~ 1.0MPa	-5 ~ 60°C
SH-06	G1/8	6			
SH-08	G1/4	8			
SH-10	G3/8	10			
SH-15	G1/2	15			

### Ordering Code

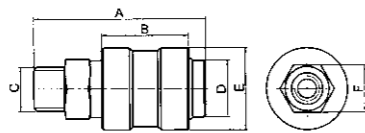
SH

Series

06

Pipe size  
06: G1/8  
08: G1/4  
10: G3/8  
15: G1/2

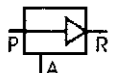
### Figure Dimension



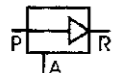
Specification	SH-M5	SH-06	SH-08	SH-10	SH-15
A	38	47	55	57	72
B	20	26	30	30	30
C	M5	G1/8	G1/4	G3/8	G1/2
D	φ 10	φ 14	φ 18	φ 21	φ 21
E	φ 16	φ 21	φ 26	φ 30	φ 30
F	12	15	19	22	24

## Vacuum operating Valve

### Technical Parameter



● ZK-06



● ZK-08

Item Specification	Pipe Size	Nozzle Dia. (mm)	Applicable Medium	Air displacement L/Min	Up-to Vacuum degree -Kpa(-mmHg)	Air Consumption L/min	Applicable pressure -Mpa(Kgf/cm <sup>2</sup> )	Medium Temperature
ZK-06	G1/8	1	Air	27	-91.8(690)	44	0.5(5)	0 ~ 60°C
ZK-08	G1/4	1.5		63	-91.8(690)	100	0.5(5)	
ZK-10	G3/8	2		110	-91.8(690)	180	0.5(5)	

### Ordering Code

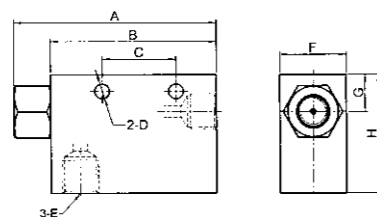
ZK

Series

06

Pipe size

### Figure Dimension



Specification	ZK-06	ZK-08	ZK-10
A	55	78	105
B	45	63	85
C	20	25	31.5
D	φ 4	φ 4.6	φ 6
E	G1/8	G1/4	G3/8
F	16	20	25
G	10	11	15
H	32	35	40

## Oscillator



● VK-20



● VK-08

### Character

Using compressed air as the power to driven stainless ball. The round of the ball could producing frequency vibrations. So that brings the parts to vibrations. And have the function of mixing. Within a certain range, the frequency could be regulated by the pressure of the air. It could be used in the light manufacturing such as food, drink, medicine etc and also in the machinery industry.

### Ordering Code

VK

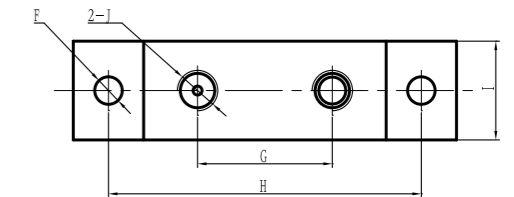
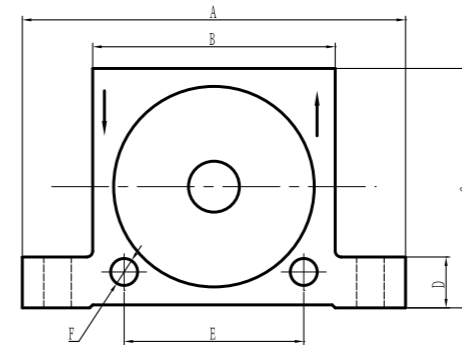
Series

08

Type  
08  
16  
20  
36

### Technical Parameter

Type	VK08	VK16	VK20	VK36
Applicable Medium	Filtrate compress Air (Lubrication or No-Lubrication)			
Design	Steel ball rotary acting			
Install Method	Dos shell 2- φ9 hole			
Note	Pay attention the showout with entrance and exit of pipeline, not reverse installment			



### Figure Dimension

Type	A	B	C	D	E	F	G	H	I	J
VK-08	86	51	50	12	38.5	φ 6.5	27	68	21	G1/4
VK-16	113	66	65.5	17	50	φ 9	40	90	28	G1/4
VK-20	128	84	80	17	61	φ 9	55	105	38	G1/4
VK-36	161	105	100	21	80	φ 11	72	130	50	G1/4