

2 Positions/3 Ports、2 Positions/4 Ports、2 Positions/5 Ports Foot Valve

Ordering Code

TG	23	J	08	L
Series	Function	Control Form	Pipe size	Type Code
	23 : 2 Positions/3 Ports 24 : 2 Positions/4 Ports 25 : 2 Positions/5 Ports	J : Foot Pedal	08 : G1/4	No Mark : Basic Type LG : With Lock & Guard L : With Lock G : With Guard

Character

It is a foot control valve, widely applied to all kinds of pneumatic system. With small operation force, and emancipation of hands. The R and P ports of two-position & three-port valve can be interchangeable to change the normally close to normally open.

Technical Parameter

Item Specification	Function	Pipe size	Nominal Diameter (mm)	Applicable Medium	Pressure Range	Operating Method	Lubrication	Medium Temperature
TG23-J-08	2 Positions/3 Ports	G1/4	8	Air	0 ~ 0.8MPa	Foot	Needless	-5 ~ 60°C
TG24-J-08	2 Positions/4 Ports	G1/4	8					
TG25-J-08	2 Positions/5 Ports	G1/4	8					
TG25-J-08L	2 Positions/5 Ports	G1/4	8					
TG25-J-08LG	2 Positions/5 Ports	G1/4	8					

2 Positions/3 Ports Foot Valve



● TG23-J-08

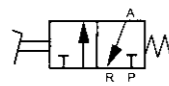
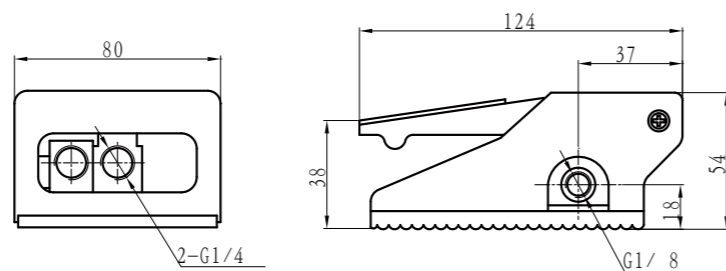


Figure Dimension

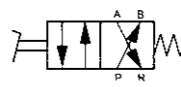
● TG23-J-08



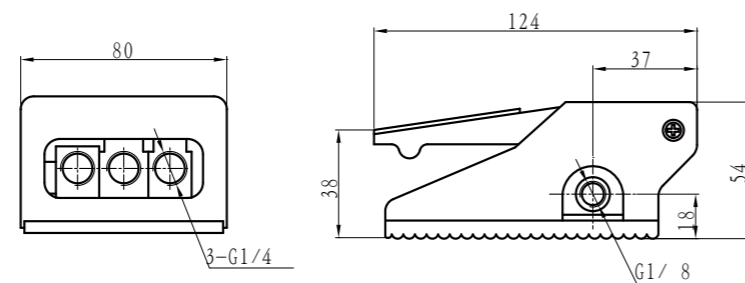
2 Positions/4 Ports Foot Valve



● TG24-J-08



● TG24-J-08

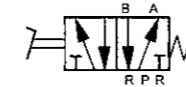


Foot Valve

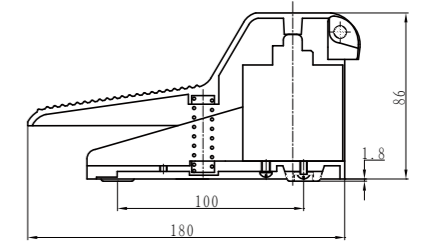
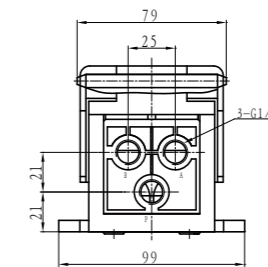
2 Positions/5 Ports Foot Valve



● TG25-J-08



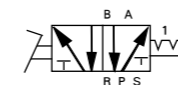
● TG25-J-08



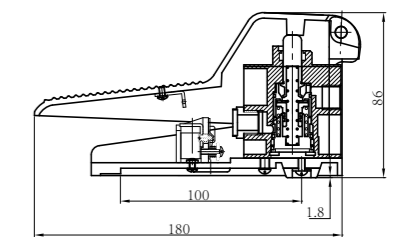
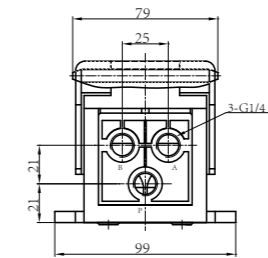
2 Positions/5 Ports Foot Valve With Lock



● TG25-J-08L



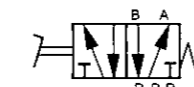
● TG25-J-08L



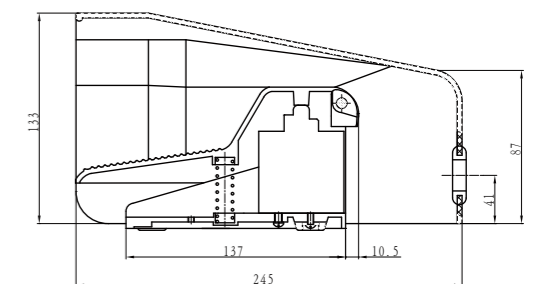
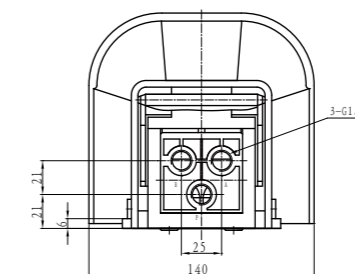
2 Positions/5 Ports Foot Valve with Guard



● TG25-J-08G



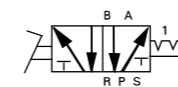
● TG25-J-08G



2 Positions/5 Ports Foot Valve With Lock & Guard



● TG25-J-08LG



● TG25-J-08LG

