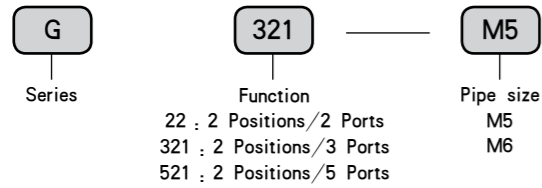


Mechanical Valve

Ordering Code



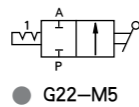
Character

Product design, compact, good looks, with the operating force, easy to use and so on. Pneumatic devices were widely used in control devices.

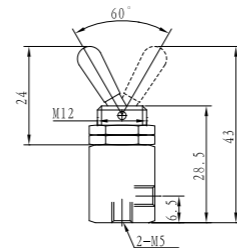
Technical Parameter

Item \ Specification	G22-M5	G321-M5	G521-M5
Medium Temperature		-5 ~ 60°C	
Pressure Range		0 ~ 1.0 MPa	
Lubrication		Needless	
Pipe Size		M5	
Control Form		Hand	
Applicable Medium		Air	
Function		Brass	
Material of body	2 Positions/2 Ports	2 Positions/3 Ports	2 Positions/5 Ports

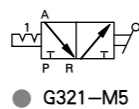
2 Positions/2 Ports



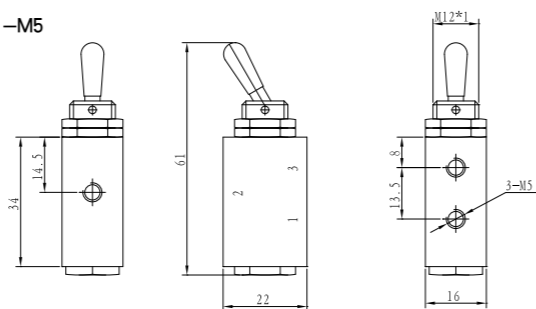
● G22-M5



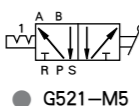
2 Positions/3 Ports



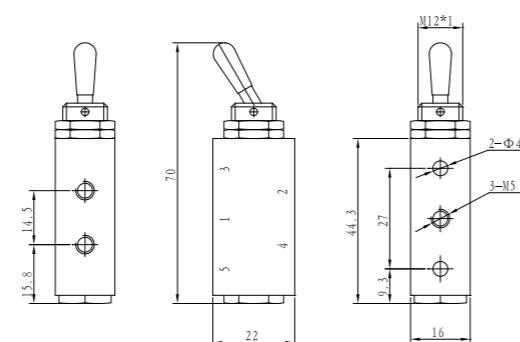
● G321-M5



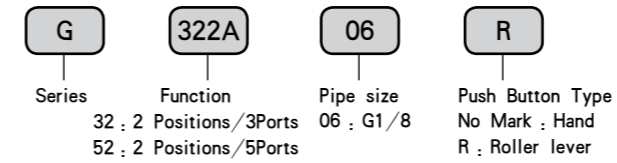
2 Positions/5 Ports



● G521-M5



Ordering Code



G series Manually Valve/Mechanical Valve

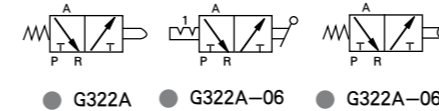
Character

Product design, compact, good looks, with the operating force, easy to use and so on. Pneumatic devices were widely used in control devices.

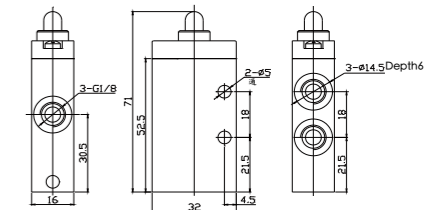
Technical Parameter

Item \ Specification	Function	Pipe size	Nominal Diameter (mm)	Applicable Medium	Pressure Range	Operating Method	Lubrication	Medium Temperature
G322A-06	2 Positions/3Ports	G1/8	6	Compress Air Inert gas	0 ~ 1.0MPa	Hand	Needless	-5 ~ 60°C
G322A-06R		G1/8	6			Roller lever		
G522A-06	2 Positions/5Ports	G1/8	6			Hand		
G522A-06R		G1/8	6			Roller lever		

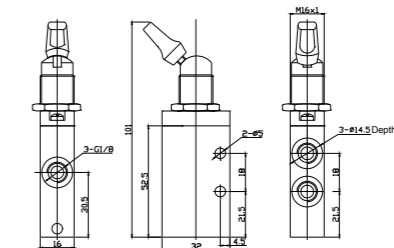
2 Positions/3 Ports Manually Valve/Mechanical Valve



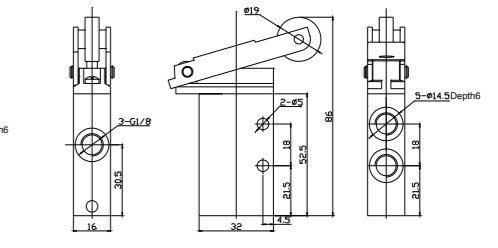
● G322A



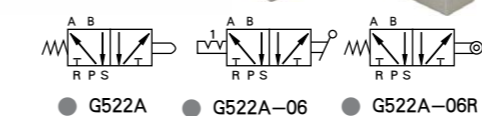
● G322A-06



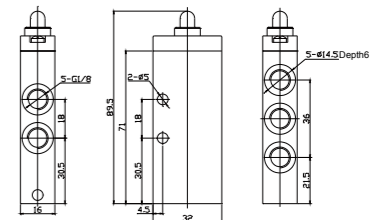
● G322A-06R



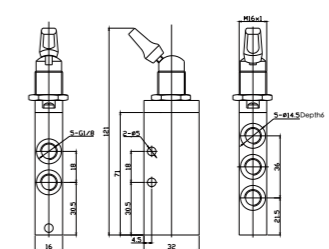
2 Positions/5 Ports Manually Valve/Mechanical Valve



● G522A



● G522A-06



● G522A-06R

