

DNC Series ISO6431 Standard Cylinder



DNC 50 x 100

MDNC 50 x 100

TDNC 50 x 100

Ordering Code

DNC **50** × **100** — **25** — **S** —

Tube Type
 Blank: Square Type
 T: Tie-rod Type
 M: Mickey Mouse Type

Series Code
 DNC: ISO6431 Standard Double Action Type
 DNCJ: ISO6431 Two Axis Stroke Adjust Type

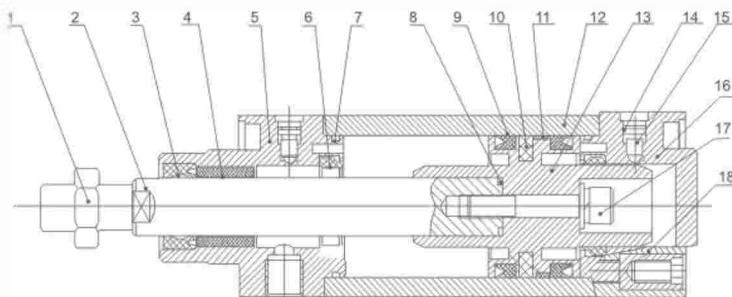
Cylinder Bore
 32mm-125mm

Stroke
 25: 25mm
 50: 50mm
 75: 75mm

Magnet Code
 Blank: Without Magnet
 S: With Magnet

Fixed Type
 Blank: Normal type
 LB: Front and back fixed type
 FA: Front cover fixed type (Front flange type)
 FB: Back cover fixed type (Back flange type)
 CA: Back cover fixed type (Single earring)
 CB: Back cover fixed type (Double earring)
 SDB: Back cover fixed type

Internal structure



NO	Designation	NO	Designation
1	Piston Rod Nut	2	Piston Rod
3	Front Cover Seal Ring	4	Bearing
5	Front Cover	6	Buffering O-Ring
7	O-Ring	8	Piston rod O-Ring
9	Piston O-Ring	10	Magnet (Optional)
11	Wear Ring	12	Barrel
13	Piston	14	Cushion Seal
15	Cushion Needle	16	Back Cover
17	Hex Socket Screw	18	Profile Bolt

Specification

Bore (mm)	32	40	50	63	80	100	125
Motion Pattern	Double Action						
Working Medium	Filtered Air						
Compression Pressure	1.5MPa						
Max. Operating Pressure	1.0MPa						
Min. Operating Pressure	0.1MPa						
Buffer	Air Buffer (Standard)						
Condition Temperature	-5~70°C						
Operating Speed	50~800mm/s						
Port Size	G1/8"	G1/4"	G3/8"	G1/2"			

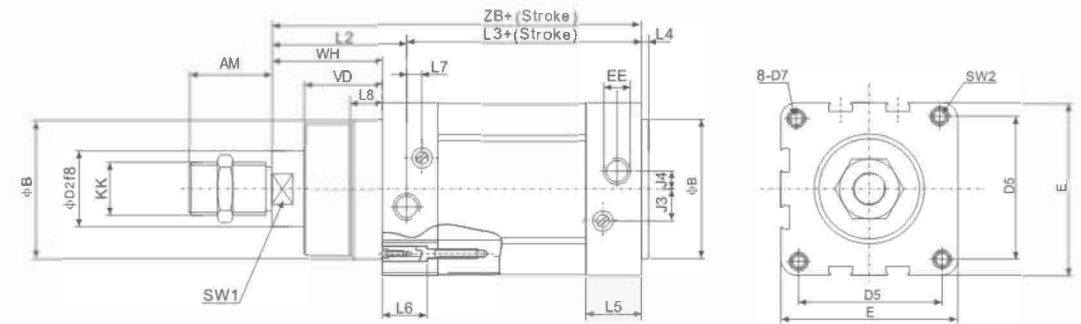
Stroke

Bore	Standard Stroke	Buffer Stroke	Stroke Range
32			
40		20	
50	25 40 50 80		10~2000
63	100 125 160	22	
80	200 250 320	32	
100	400 500	35	
125			

DNC Series ISO6431 Standard Cylinder

Overall Dimensions

Normal Type
DNC-S

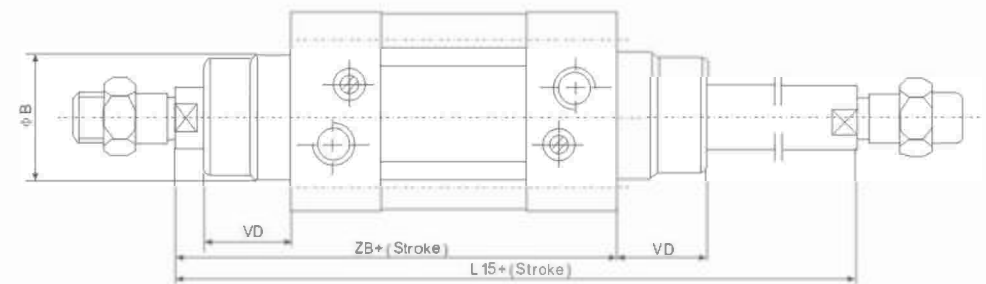


Dimension Sheet

Bore	AM	B	D2	D5	D7	E	EE(G)	J3	J4	KK	L2	L3	L4	L5	L6	L7	L8	SW1	SW2	VD	WH	ZB
32	22	30	12	32.5	M6	45	1/8	6	5.2	M10×1.25	40	80	4	26	22	3.3	8	10	6	16	26	120
40	24	35	16	38	M6	54	1/4	8	6	M12×1.25	46	89	4	29.6	22	3.6	10	13	6	20	30	135
50	32	40	20	46.5	M8	64	1/4	10	8.5	M16×1.5	54	90	4	30	22	5.1	10	17	8	27	37	144
63	32	45	20	56.5	M8	75	3/8	12.4	10	M16×1.5	57	101	4	35.5	22	6.6	10	17	8	27	37	158
80	40	45	25	72	M10	93	3/8	12.5	8	M20×1.5	65	109	4	36	25	10.5	10	22	10	34.5	46	174
100	40	55	25	89	M10	110	1/2	11.8	10	M20×1.5	71	118	4	39	25	8	12.5	22	10	38	51	189
125	54	60	32	110	M12	134	1/2	13	8	M27×2	95	128	6	44.7	30	14	12.5	28	12	46	65	223

Overall Dimensions

Double Piston Rod Type
DNC-D-S



Dimension Sheet

Bore	32	125	100	63	80	100	125
B	30	35	40	45	45	55	60
L15	146	165	182	194	220	240	298
VD	16	20	27	27	34.7	38.2	46
ZB	120	135	144	158	174	189	223

DNCB Series Booster Cylinder



DNCB-50 x 25 x 50

Specification

Motion Pattern	Filtered Air
Compression Pressure	1.5MPa
Max. Operating Pressure	1.0MPa
Min. Operating Pressure	0.1MPa
Condition Temperature	-5~70°C

Product instruction

Booster cylinder combine 2 or more ISO15552 standard cylinder with the same bore and stroke. Create twice or multiple force as standard cylinder. The connection of 2 or more cylinders are linked with the same material Compact structure and easy for installation.



DNC Series ISO15552 Standard Cylinder



DNG 200 x 100-S



DNG 250 x 200-S

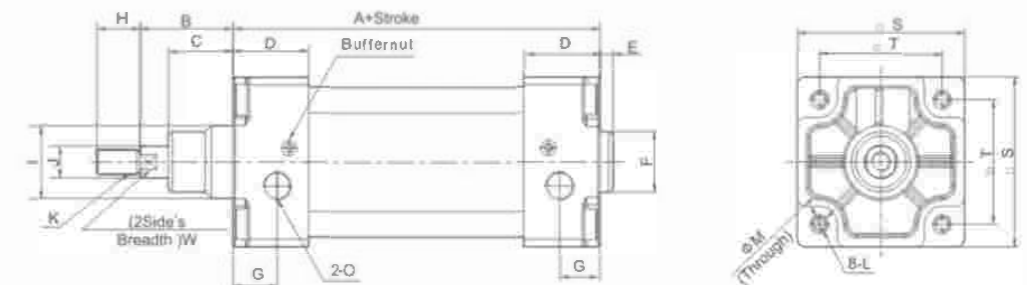
Ordering Code

DNG	160	×	100	-	25	-	S	-	□
Series Code DNG:ISO15552 Standard Double Action Type DNGD:ISO15552 Standard Two Axis Double Action Type DNGJ:ISO15552 TwoAxis StrokeAdjust Type	Cylinder Bore 160mm-320mm		Stroke		Adjust Stroke 25:25mm 50:50mm 75:75mm		Magnet Code Blank:Without Magnet S:With Magnet		Fixed Type Blank:Normal type LB:Front and back fixed type FA:Front cover fixed type(Front flange type) FB:Back cover fixed type(Back flange type) CA:Back cover fixed type (Single earring) CB:Back cover fixed type(Double earring)

Specifications

Bore(mm)	160	200	250	320
Motion Pattern	Double Action			
Working Medium	Air			
Fixed Type	Normal type FA type FB type CA type CB type LB type TC type			
Working Pressure Range	0.1-1.0MPa			
Ensured Pressure Resistance	1.5MPa			
Operating Temperature Range	-5-60℃			
Operating Speed Range	50-500mm/s			
Buffer Type	Adjustable Buffer			
Port Size	G3/4"		G1"	
Lubrication	Not required (Use Turbine oil/ISO Vg32 when necessary)			

Overall Dimensions



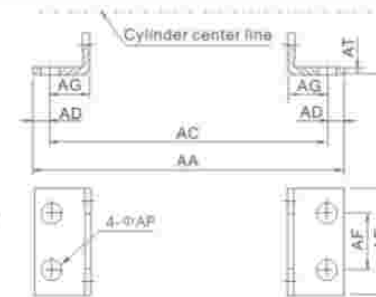
Dimension Sheet

Bore/Symbol	A	B	C	D	E	F	G	H	I	J	K	L	M	S	T	O
160	180	80	60	50	6	φ65	25	72	φ65	40	M36x2	M16	φ25φ30	180	140	G3/4"
200	180	95	70	50	6	φ75	25	72	φ75	40	M36x2	M16	φ25φ30	220	175	G3/4"
250	200	105	67	52	10	90	31	84	90	50	M42x2	M20	φ30	270	220	G1"
320	216	120	62	52	10	110	31	96	110	63	M48x2	M24	φ34	340	270	G1"

Cylinder Accessories

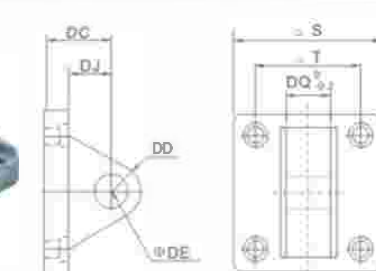
Cylinder accessories include the mounting parts to fix the air cylinder, made by aluminum or steel. They are available for Standard Cylinders and Mini Cylinders. Magnetism Switch are used as sensor which connected with PLC, to recognize the position of piston inside of air cylinder.

ISO Standard Cylinder Accessories



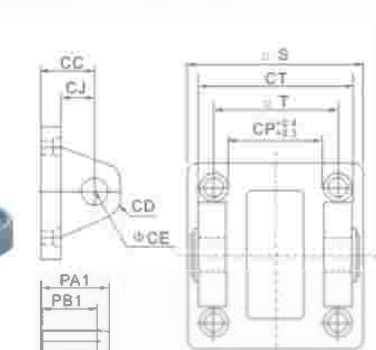
ISO-LB Type Foot Bracket

Symbol/Bore	32	40	50	63	80	100	125	160	200
AA	158	179	190	209	248	266	290	340	380
AC	142	161	170	185	210	228	250	300	320
AD	8	9	10	12	19	19	20	20	30
AE	47	53	65	75	95	115	140	180	220
AF	32	36	45	50	63	75	90	115	135
AG	24	28	32	32	41	45	45	60	70
AH	32	36	45	50	63	71	90	115	135
AP	7	9	9	9	12	14.5	16.5	18.5	24
AT	3	3	3	3	4	4	6	6	9



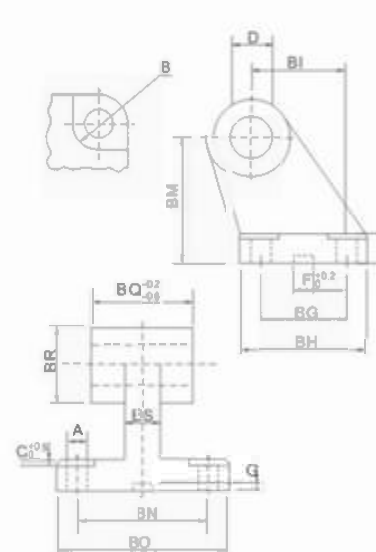
ISO-CA Type Single Earring

Symbol/Bore	32	40	50	63	80	100	125	160	200
S	47	53	65	75	95	115	140	180	220
T	325	38	46.5	56.5	72	89	110	140	175
DC	22	25	27	32	36	41	50	55	60
DD	9	12	12	15	15	20	25	30	30
DE	10	12	12	16	16	20	25	30	30
DJ	13	16	17	22	22	27	33	35.5	36
DQ	258	278	317	397	497	597	697	89.7	89.7



ISO-CB+Pin Type Double Earring

Symbol/Bore	32	40	50	63	80	100	125	160	200
CC	22	25	27	32	36	41	50	55	60
CD	9	12	12	15	15	20	25	30	30
CE	10	12	12	16	16	20	25	30	30
CJ	13	16	17	22	22	27	31	35.5	36
CP	26	28	32	40	50	60	70	90	90
CT	45	52	60	70	90	110	130	170	170
PA1	51	59	67	77	97	119	139	181	181
PB1	45.5	52.5	60.5	70.5	90.5	110.5	130.5	170.5	170.5
S	47	53	65	75	95	115	140	180	220
T	32.5	38	46.5	56.5	72	89	110	140	175



ISO-SDB Type

Symbol/Bore	32	40	50	63	80	100	125
A	6.6	6.6	9	9	11	11	14
B	11	11	15	15	18	18	20
BG	18	22	30	35	40	50	60
BH	31	35	45	50	60	70	90
BI	21	24	33	37	47	55	70
BL	8	10	12	14	14	17	20
BM	32	36	45	50	63	71	90
BN	38	41	50	52	66	76	94
BQ	51	54	65	67	86	96	124
BS	10	15	16	16	20	20	30
BR	20	22	26	30	30	38	45
C	1.6	1.6	1.6	1.6	2.5	2.5	3.2
D	10	12	12	16	16	20	25
F	10.5	10.5	10.5	10.5	10.5	10.5	10.5
G	3	3	3	3	3	3	3
BQ	26	28	32	40	50	60	70