

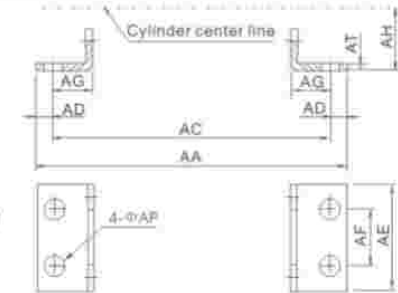


# Cylinder Accessories

Cylinder accessories include the mounting parts to fix the air cylinder, made by aluminum or steel. They are available for Standard Cylinders and Mini Cylinders. Magnetism Switch are used as sensor which connected with PLC, to recognize the position of piston inside of air cylinder.

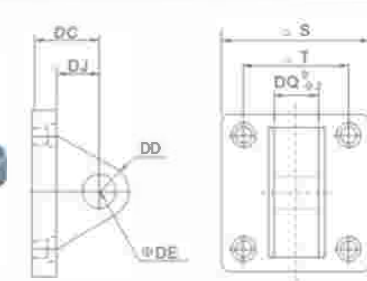


## ISO Standard Cylinder Accessories



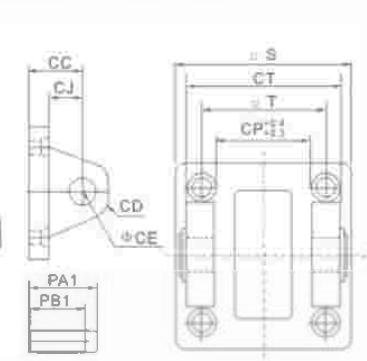
ISO-LB Type Foot Bracket

| Symbol/Bore | 32  | 40  | 50  | 63  | 80  | 100  | 125  | 160  | 200 |
|-------------|-----|-----|-----|-----|-----|------|------|------|-----|
| AA          | 158 | 179 | 190 | 209 | 248 | 266  | 290  | 340  | 380 |
| AC          | 142 | 161 | 170 | 185 | 210 | 228  | 250  | 300  | 320 |
| AD          | 8   | 9   | 10  | 12  | 19  | 19   | 20   | 20   | 30  |
| AE          | 47  | 53  | 65  | 75  | 95  | 115  | 140  | 180  | 220 |
| AF          | 32  | 36  | 45  | 50  | 63  | 75   | 90   | 115  | 135 |
| AG          | 24  | 28  | 32  | 32  | 41  | 45   | 45   | 60   | 70  |
| AH          | 32  | 36  | 45  | 50  | 63  | 71   | 90   | 115  | 135 |
| AP          | 7   | 9   | 9   | 9   | 12  | 14.5 | 16.5 | 18.5 | 24  |
| AT          | 3   | 3   | 3   | 3   | 4   | 4    | 6    | 6    | 9   |



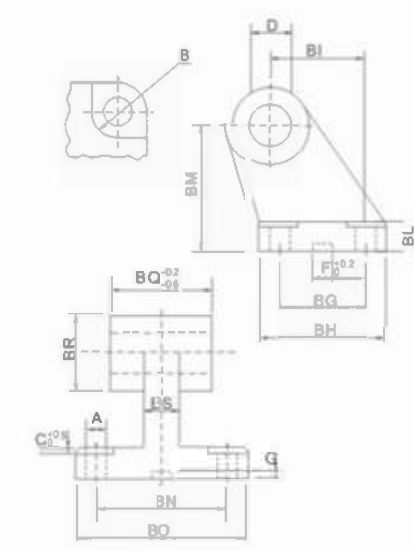
ISO-CA Type Single Earring

| Symbol/Bore | 32   | 40   | 50   | 63   | 80   | 100  | 125  | 160  | 200  |
|-------------|------|------|------|------|------|------|------|------|------|
| S           | 47   | 53   | 65   | 75   | 95   | 115  | 140  | 180  | 220  |
| T           | 325  | 38   | 46.5 | 56.5 | 72   | 89   | 110  | 140  | 175  |
| DC          | 22   | 25   | 27   | 32   | 36   | 41   | 50   | 55   | 60   |
| DD          | 9    | 12   | 12   | 15   | 15   | 20   | 25   | 30   | 30   |
| DE          | 10   | 12   | 12   | 16   | 16   | 20   | 25   | 30   | 30   |
| DJ          | 13   | 16   | 17   | 22   | 22   | 27   | 33   | 35.5 | 36   |
| DQ          | 25.8 | 27.8 | 31.7 | 39.7 | 49.7 | 59.7 | 69.7 | 89.7 | 89.7 |



ISO-CB+Pin Type Double Earring

| Symbol/Bore | 32   | 40   | 50   | 63   | 80   | 100   | 125   | 160   | 200   |
|-------------|------|------|------|------|------|-------|-------|-------|-------|
| CC          | 22   | 25   | 27   | 32   | 36   | 41    | 50    | 55    | 60    |
| CD          | 9    | 12   | 12   | 15   | 15   | 20    | 25    | 30    | 30    |
| CE          | 10   | 12   | 12   | 16   | 16   | 20    | 25    | 30    | 30    |
| CJ          | 13   | 16   | 17   | 22   | 22   | 27    | 31    | 35.5  | 36    |
| CP          | 26   | 28   | 32   | 40   | 50   | 60    | 70    | 90    | 90    |
| CT          | 45   | 52   | 60   | 70   | 90   | 110   | 130   | 170   | 170   |
| PA1         | 51   | 59   | 67   | 77   | 97   | 119   | 139   | 181   | 181   |
| PB1         | 45.5 | 52.5 | 60.5 | 70.5 | 90.5 | 110.5 | 130.5 | 170.5 | 170.5 |
| S           | 47   | 53   | 65   | 75   | 95   | 115   | 140   | 180   | 220   |
| T           | 32.5 | 38   | 46.5 | 56.5 | 72   | 89    | 110   | 140   | 175   |



ISO-SDB Type

| Symbol/Bore | 32   | 40   | 50   | 63   | 80   | 100  | 125  |
|-------------|------|------|------|------|------|------|------|
| A           | 6.6  | 6.6  | 9    | 9    | 11   | 11   | 14   |
| B           | 11   | 11   | 15   | 15   | 18   | 18   | 20   |
| BG          | 18   | 22   | 30   | 35   | 40   | 50   | 60   |
| BH          | 31   | 35   | 45   | 50   | 60   | 70   | 90   |
| BI          | 21   | 24   | 33   | 37   | 47   | 55   | 70   |
| BL          | 8    | 10   | 12   | 14   | 14   | 17   | 20   |
| BM          | 32   | 36   | 45   | 50   | 63   | 71   | 90   |
| BN          | 38   | 41   | 50   | 52   | 66   | 76   | 94   |
| BQ          | 51   | 54   | 65   | 67   | 86   | 96   | 124  |
| BS          | 10   | 15   | 16   | 16   | 20   | 20   | 30   |
| BR          | 20   | 22   | 26   | 30   | 30   | 38   | 45   |
| C           | 1.6  | 1.6  | 1.6  | 1.6  | 2.5  | 2.5  | 3.2  |
| D           | 10   | 12   | 12   | 16   | 16   | 20   | 25   |
| F           | 10.5 | 10.5 | 10.5 | 10.5 | 10.5 | 10.5 | 10.5 |
| G           | 3    | 3    | 3    | 3    | 3    | 3    | 3    |
| BQ          | 26   | 28   | 32   | 40   | 50   | 60   | 70   |