

SFW,SFN,MF



SYMBOL

HOW TO ORDER

| | |
|-------------------------|------------------------|
| SFN | -12 |
| SERIES NUMBER | FILTER SIZE |
| SFN: WIRE TYPE | REFER TO SPECIFICATION |
| SFW: MESH TYPE | |
| MF: MAINTAIN CURVE TYPE | |

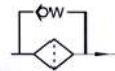
SPECIFICATION

| MODEL | SIZE PT | FLOW (L/min) | FILTRATION MESH | MODEL | SIZE PT | FLOW (L/min) | FILTRATION MESH | |
|--------|---------|--------------|-----------------|--------|---------|--------------|-----------------|-----|
| MF-02 | 1/4" | 15 | 100 | SFW-08 | 1" | 100 | 125 | |
| MF-03 | 3/8" | 17 | | SFW-10 | 1 1/4" | 180 | | |
| MF-04 | 1/2" | 33 | | SFW-12 | 1 1/2" | 246 | | |
| MF-06 | 3/4" | 55 | | SFW-16 | 2" | 384 | | |
| MF-08 | 1" | 110 | | SFW-20 | 2 1/2" | 700 | | |
| MF-10 | 1 1/4" | 210 | | SFW-24 | 3" | 800 | | |
| MF-12 | 1 1/2" | 285 | | SFW-32 | 4" | 1000 | | |
| MF-16 | 2" | 395 | | SFN-04 | 1/2" | 35 | | 150 |
| MF-20 | 2 1/2" | 750 | | SFN-06 | 3/4" | 46 | | |
| MF-24 | 3" | 800 | | SFN-08 | 1" | 90 | | |
| MF-32 | 4" | 1000 | | SFN-10 | 1 1/4" | 150 | | |
| SFW-02 | 1/4" | 15 | | SFN-12 | 1 1/2" | 205 | | |
| SFW-03 | 3/8" | 17 | SFN-16 | 2" | 320 | | | |
| SFW-04 | 1/2" | 33 | SFN-20 | 2 1/2" | 550 | | | |
| SFW-06 | 3/4" | 50 | SFN-24 | 3" | 600 | | | |

FPC



06P, 08P 06t, 08T 12PR 12P:series



SYMBOL

HOW TO ORDER

| FPC | -06 | -P | A | 1 |
|---------------|------------|---------------|------------------|-----------------------|
| SERIES NUMBER | VALVE SIZE | MOUNTED | mesh | PRESSURE INDICATOR |
| FPC | 06 | P:PIPING | ELEMENT TYPE,μ | NONE:WITHOUT |
| | 08 | T:TANK | A:10μ(Paper) | 1.VISUAL INDICATOR |
| | 10 | 12PR:PARALLEL | B:25μ(Paper) | 2.ELECTICAL INDICATOR |
| | 12 | 12P:Series | -:100mesh(steel) | |

SPECIFICATION

| MODEL | SIZE PT | FLOW(L/min) | MOUNTED |
|----------|---------|-------------|---|
| FPC-06P | 3/4" | 67 | P:PIPING 12PR:PARALLEL 12P:SERIES T:Tank |
| FPC-08P | 1" | 100 | |
| FPC-10P | 1 1/4" | 190 | |
| FPC-06T | 3/4" | 67 | |
| FPC-08T | 1" | 100 | |
| FPC-12P | 1 1/2" | 375 | |
| FPC-12PR | 1 1/2" | 375 | |