

CHARACTERISTICS

Ambient temperature	0 ÷ +60 °C
Fluid	filtered air, with or without lubrication
Working pressure	10 bar
Max pressure	15 bar
Size	0 - 1 - 2
Body	tecnopolymer with metal threaded elements (size 0) die-cast aluminium (size 1 - 2)
Knob	tecnopolymer
Ring nut	tecnopolymer
Bowl	polycarbonate
Bowl guard	tecnopolymer (size 1-2)
Filter element	polyethylene
Seals	NBR
Springs	steel
Diaphragm	fabric reinforced rubber


For round gauge mounting (HZ9P):

Size 0 = Replace HZ9464G gauge with HZE7Z480 square adaptor G1/8, to be ordered separately

Size 1-2 = Replace HZ9464G gauge with HZE7Z480 square adaptor G1/8 placed on the rear side of the regulator or filter regulator

CODIFICATION KEY

H	Z	E	0	B	0	8	G		M
1	2	3	4	5	6				

1 Series	2 Size	3 Model
HZE = Air treatment units with standard manual drain	0 = Small (G1/4) 1 = Medium (G3/8 - G1/2) 2 = Large (G1/2)	F = Filter R = Regulator L = Lubricator B = Filter regulator D = Filter regulator+Lubricator (FR+L) C = Filter+Regulator+Lubricator (F+R+L)

4 Thread	5 Option	6 Pressure gauge
08G = G1/4 (size 0) 10G = G3/8(size 1) 15G = G1/2 (size 1-2) 20G = G3/4 (size 2) * 25G = G1 (size 2) *	A = Automatic drain (except for size 0) S = Semi-automatic drain	M = Integrated square pressure gauge (standard supplied) Square adaptor G1/8 upon request

* = with threaded ends

Filter


Size	0	1	2
Part No.	HZE0F08G	HZE1F10G	HZE2F15G
Connections	G1/4	G3/8	G1/2
Filtration rate (µm)	5	5	5
Nominal flow rate (NI/min) ^(A)	1100	3500	6500
Max inlet pressure (bar-MPa-psi)	10 - 1 - 145	10 - 1 - 145	10 - 1 - 145
Condensation drain capacity (cm ³)	12	45	80
Condensation drain	manual	manual	manual

(A) = Inlet pressure 7 bar, Δp 0,5 bar

Regulator

		0	1	
Size				
Part No.	HZE0R08GM	HZE1R10GM	HZE1R15GM	HZE2R15GM
Connections	G1/4	G3/8	G1/2	G1/2
Nominal flow rate (NI/min) ^(A)	1000	2100		4300
Max inlet pressure (bar-MPa-psi)	10 - 1 - 145	10 - 1 - 145		10 - 1 - 145
Pressure adjustment-relieving version (bar)	0,5 ÷ 8,5	0,5 ÷ 8,5		0,5 ÷ 8,5
Pressure gauge (standard supplied)	HZ9464G	HZ9464G		HZ9464G
Pressure gauge adaptor	G1/8 ^(B)	G1/8 ^(C)		G1/8 ^(C)

(A) = Inlet pressure 7 bar, outlet pressure 5 bar - Δp 1 bar

(B) = Upon request (replace HZ9464G gauge with HZE7Z480 square adaptor G1/8, to be ordered separately)

(C) = Standard supplied (replace HZ9464G gauge with HZE7Z480 square adaptor G1/8 placed on the rear side)

Other available versions

■ Without manometer size 0

■ Lockable knob size 1-2

■ Check valve size 0-1-2

The check valve inside the regulator allows to relieve downstream pressure in a quick and effective way.

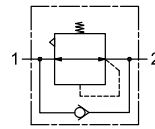


Size	Part No.
0	HZE0R08G



Size	Part No.
1	HZE1RL10GM - HZE1RL15GM
2	HZE2RL15GM

Lock not included



Size	Part No.
0	HZE0R08GMV
1	HZE1R10GMV-HZE1R15GMV
2	HZE2R15GMV

Lubricator

		0	1	
Size				
Part No.	HZE0L08G	HZE1L10G	HZE1L15G	HZE2L15G
Connections	G1/4	G3/8	G1/2	G1/2
Nominal flow rate (NI/min) ^(A)	1400	4400		7000
Max inlet pressure (bar-MPa-psi)	10 - 1 - 145	10 - 1 - 145		10 - 1 - 145
Bowl capacity (cm³)	20	85		170
Recommended oil	ISO VG 32	ISO VG 32		ISO VG 32
Min. working flow rate (NI/min)	25	30		65

(A) = Inlet pressure 7 bar - Δp 0,5 bar

Filter regulator



Size	0		1		2
Part No.	HZE0B08GM		HZE1B10GM	HZE1B15GM	HZE2B15GM
Connections	G1/4		G3/8	G1/2	G1/2
Filtration rate (µm)	5		5		5
Nominal flow rate (NI/min) ^(A)	600		2300		4500
Max inlet pressure (bar-MPa-psi)	10 - 1 - 145		10 - 1 - 145		10 - 1 - 145
Pressure adjustment - relieving version (bar)	0,5 ÷ 8,5		0,5 ÷ 8,5		0,5 ÷ 8,5
Pressure gauge (standard supplied)	HZ9464G		HZ9464G		HZ9464G
Pressure gauge adaptor	G1/8 ^(B)		G1/8 ^(C)		G1/8 ^(C)
Condensation drain capacity (cm ³)	12		45		80
Condensation drain	manual		manual		manual

(A) = Inlet pressure 7 bar, outlet pressure 5 bar - Δp 1 bar

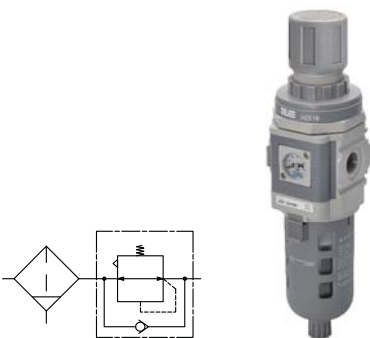
(B) = Upon request (replace HZ9464G gauge with HZE7Z480 square adaptor G1/8, to be ordered separately)

(C) = Standard supplied (replace HZ9464G gauge with HZE7Z480 square adaptor G1/8 placed on the rear side)

Other available versions

■ Check valve size 0-1-2

The check valve inside the filter regulator allows to relieve downstream pressure in a quick and effective way.



Size	Part No.
0	HZE0B08GMV
1	HZE1B10GMV-HZE1B15GMV
2	HZE2B15GMV

Filter regulator + Lubricator



Size	0		1		2
Part No.	HZE0D08GM		HZE1D10GM	HZE1D15GM	HZE2D15GM
Connections	G1/4		G3/8	G1/2	G1/2
Filtration rate (µm)	5		5		5
Nominal flow rate (NI/min) ^(A)	600		2800		4300
Max inlet pressure (bar-MPa-psi)	10 - 1 - 145		10 - 1 - 145		10 - 1 - 145
Fluid	compressed air		compressed air		compressed air
Pressure adjustment - relieving version (bar)	0,5 ÷ 8,5		0,5 ÷ 8,5		0,5 ÷ 8,5
Pressure gauge (standard supplied)	HZ9464G		HZ9464G		HZ9464G
Pressure gauge adaptor	G1/8 ^(B)		G1/8 ^(C)		G1/8 ^(C)
Condensation drain capacity (cm ³)	12		45		80
Condensation drain	manual		manual		manual
Recommended oil	ISO VG 32		ISO VG 32		ISO VG 32
Min. working flow rate (NI/min)	25		30		65

(A) = Inlet pressure 7 bar, outlet pressure 5 bar - Δp 1 bar

(B) = Upon request (replace HZ9464G gauge with HZE7Z480 square adaptor G1/8, to be ordered separately)

(C) = Standard supplied (replace HZ9464G gauge with HZE7Z480 square adaptor G1/8 placed on the rear side)

Filter + Regulator + Lubricator



Size	0		1		2
Part No.	HZE0C08GM		HZE1C10GM	HZE1C15GM	HZE2C15GM
Connections	G1/4		G3/8	G1/2	G1/2
Filtration rate (µm)	5		5		5
Nominal flow rate (NI/min) ^(A)	550		1700		2500
Max inlet pressure (bar-MPa-psi)	10 - 1 - 145		10 - 1 - 145		10 - 1 - 145
Fluid	compressed air		compressed air		compressed air
Pressure adjustment - relieving version (bar)	0,5 ÷ 8,5		0,5 ÷ 8,5		0,5 ÷ 8,5
Pressure gauge (standard supplied)	HZ9464G		HZ9464G		HZ9464G
Pressure gauge adaptor	G1/8 ^(B)		G1/8 ^(C)		G1/8 ^(C)
Condensation drain capacity (cm ³)	12		45		80
Condensation drain	manual		manual		manual
Recommended oil	ISO VG 32		ISO VG 32		ISO VG 32
Min. working flow rate (NI/min)	25		30		65

(A) = Inlet pressure 7 bar, outlet pressure 5 bar - Δp 1 bar

(B) = Upon request (replace HZ9464G gauge with HZE7Z480 square adaptor G1/8, to be ordered separately)

(C) = Standard supplied (replace HZ9464G gauge with HZE7Z480 square adaptor G1/8 placed on the rear side)

Gradual Starter

		0	1
Size	HZE0Y08G	HZE1Y10G	HZE1Y15G
Part No.	G1/4	G3/8	G1/2
Connections	900	2200	
Nominal flow rate (NI/min) ^(A)	10 - 1 - 145	10 - 1 - 145	
Max inlet pressure (bar-MPa-psi)	2	3,5	
Min. pressure (bar)	compressed air	compressed air	
Fluid			

(A) = Inlet pressure 7 bar, outlet pressure 5 bar - Δp 1 bar

Diverter Block

		0	1
Size	HZE0N08G	HZE1N10G	HZE1N15G
Part No.	In/Out G1/4 Auxiliary G1/8	In/Out G3/8	In/Out G1/2
Connections	10 - 1 - 145	10 - 1 - 145	
Max inlet pressure (bar-MPa-psi)	compressed air	compressed air	
Fluid			

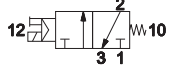
Use blanking plugs to close unused ways (not included)

Lockable Valve

		0	1
Size	HZE0P08G	HZE1P10G	HZE1P15G
Part No.	G1/4	G3/8	G1/2
Connections	900	5000	
Nominal flow rate (NI/min) ^(A)	10 - 1 - 145	10 - 1 - 145	
Max inlet pressure (bar-MPa-psi)	compressed air	compressed air	
Fluid			

(A) = Inlet pressure 7 bar, outlet pressure 5 bar - Δp 1 bar

Shut-off valve



Size	0		1	
Part No.	HZE0S08G		HZE1S10G	HZE1S15G
Connections	G1/4		G3/8	G1/2
Nominal flow rate (NI/min) ^(A)	900		2800	
Max inlet pressure (bar-MPa-psi)	10 - 1 - 145		10 - 1 - 145	
Min. pressure (bar-MPa-psi)	2 - 0,16 - 23		2 - 0,2 - 29	
Fluid	compressed air		compressed air	
Commutation system	poppet		poppet	
Ways/Positions	3/2 NC		3/2 NC	
Control	indirect electropneumatic		indirect electropneumatic	
Nominal diameter (mm)	8		10	
Electropilot	U1 AA series		U1 AA series	
Coil	DA/DC		DA/DC	
Manual Override	two-position screw		two-position screw	

(A) = Inlet pressure 7 bar, outlet pressure 5 bar - Δp 1 bar

Coils



■ U1

- DA-0050 12 V DC
- DA-0051 24 V DC
- DA-0106 24 V AC/50-60 Hz
- DA-0108 110 V AC/50-60 Hz
- DA-0124 230 V AC/50-60 Hz



■ U3

- DC-0301 12 V DC
- DC-0302 24 V DC
- DC-0307 24 V AC/50-60 Hz
- DC-0309 110 V AC/50-60 Hz
- DC-0310 230 V AC/50-60 Hz

Other available versions

■ Size 0 U05



■ Size 1 U05



■ Size 1 U3 CNOMO



HZE0/1/Z200 HZE0/1/Z2210 HZE0/1/Z2300 HZE0/1/Z2310 HZE7Z480/90 HZE2Z500/501



<p>Assembly kit Size 0 HZE0Z200 Size 1-2 HZE1Z200</p>	<p>T-bracket assembly kit Size 0 HZE0Z210 Size 1 HZE1Z210 Size 2 HZE2Z210</p>	<p>C-bracket Size 0 HZE0Z300 Size 1 HZE1Z300 Size 2 HZE2Z300</p>	<p>Regulator L-bracket Size 0 HZE0Z310 Size 1 HZE1Z310 Size 2 HZE2Z310</p>	<p>Threaded adaptor for pressure gauge Size 0-1-2 G1/8 HZE7Z480 G1/4 HZE7Z490 Screw torque: Max 0,6 Nm</p>	<p>Threaded ends Size 2 G3/4 HZE2Z500 G1 HZE2Z501</p>
--	--	---	---	---	--

Filter and filter regulator accessories

HZE0/1/Z2600 HZE0/1/Z2600SS HZE7Z400 HZE0/1/Z401 HZE0/1/Z402



<p>Standard bowl with manual drain Size 0 HZE0Z600 Size 1 HZE1Z600 Size 2 HZE2Z600</p>	<p>Bowl with semi-automatic drain Size 1 HZE1Z600SS Size 2 HZE2Z600SS</p>	<p>Automatic drain Size 1-2 HZE7Z400</p>	<p>Semi-automatic drain Size 0 HZE0Z401 Size 1-2 HZE1Z401</p>	<p>Manual drain Size 0 HZE0Z402 Size 1-2 HZE1Z402</p>
---	--	---	--	--

HZE0/1/Z2660 HZE1/Z2670



<p>Filter elements 5 µm Size 0 HZE0Z660 Size 1 HZE1Z660 Size 2 HZE2Z660</p>	<p>Coalescing filter 0,3 µm Size 1 HZE1Z670 Size 2 HZE2Z670</p>
--	--

Other filter elements upon request

Regulator and filter regulator accessories

HZE0/1/Z2602 HZE1/Z2652/4/8 HZE0/1/Z2603 HZE0/1/Z2610/1



<p>Knob Size 0 HZE0Z602 Size 1 HZE1Z602 Size 2 HZE2Z602</p>	<p>Regulator spring Size 1 Pressure adjustment HZE1Z652 0,5 ÷ 1,7 HZE1Z654 0,5 ÷ 3,5 HZE1Z658 0,5 ÷ 8,5 Size 2 HZE2Z652 0,5 ÷ 1,7 HZE2Z654 0,5 ÷ 3,5 HZE2Z658 0,5 ÷ 8,5</p>	<p>Ring nut for panel Size 0 HZE0Z603 Size 1 HZE1Z603 Size 2 HZE2Z603</p>	<p>Diaphragm kit Size 0 HZE0Z610 relieving HZE0Z611 non-relieving Size 1 HZE1Z610 relieving HZE1Z611 non-relieving Size 2 HZE2Z610 relieving HZE2Z611 non-relieving</p>
--	---	--	--

Lubricator accessories

HZE0/1/Z2601 HZE7Z470



<p>Standard bowl Size 0 HZE0Z601 Size 1 HZE1Z601 Size 2 HZE2Z601</p>	<p>Lubricator transparent dome Size 0-1-2 HZE7Z470</p>
---	---